

# The Dominica

5 BEDROOMS, 6.5 BATHS, LOFT, CLUB ROOM, 3-CAR GARAGE



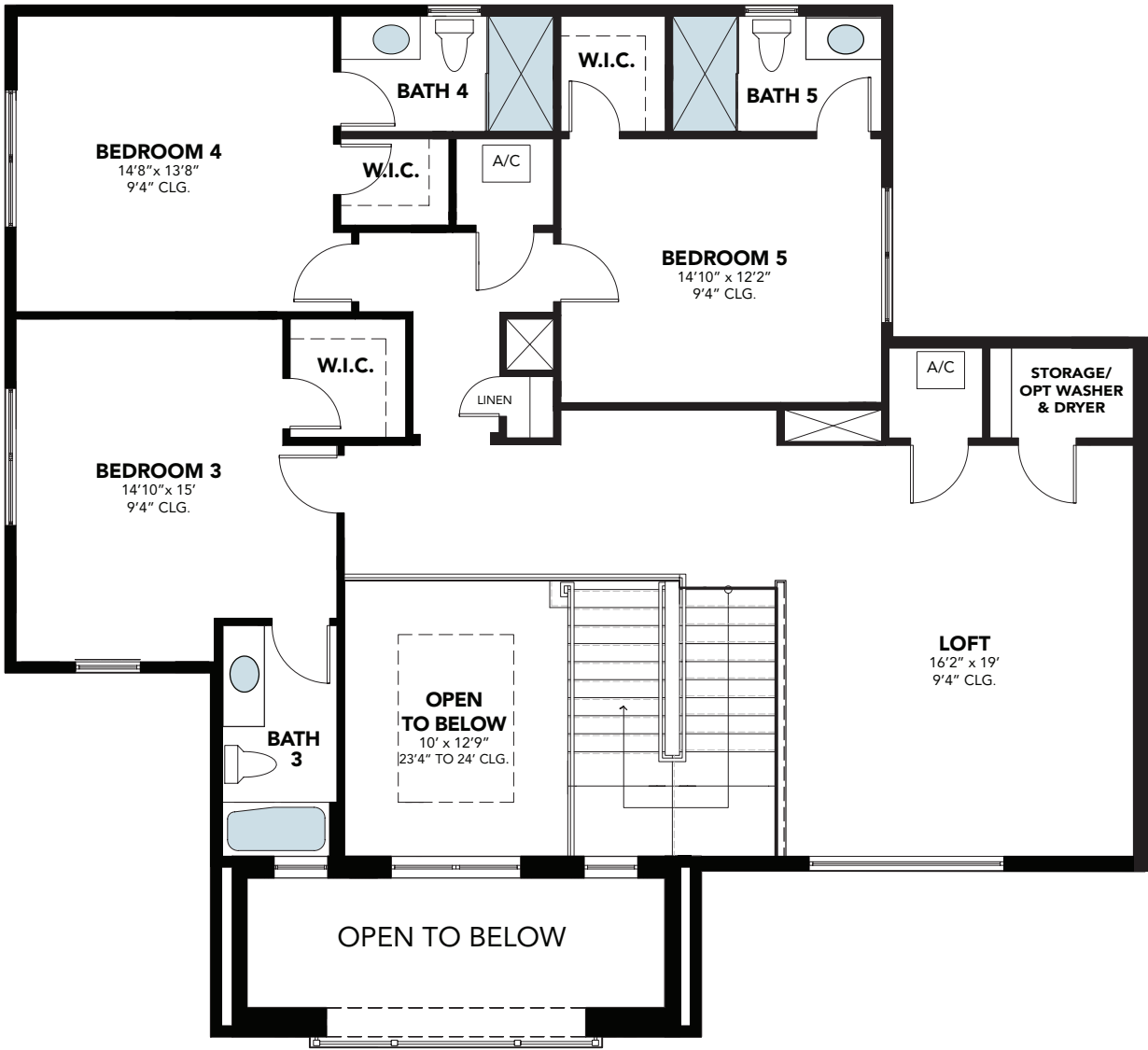
## CORAL ISLES

THE ESTATE HOME COLLECTION AT AVENIR

# The Dominica

5 BEDROOMS, 6.5 BATHS, LOFT, CLUB ROOM, 3-CAR GARAGE

## 2ND FLOOR



1ST FLOOR	
Living A/C Area	3,748 Sq. Ft.
Covered Entry	145 Sq. Ft.
Covered Lanai	527 Sq. Ft.
1-Car Garage	288 Sq. Ft.
2-Car Garage	492 Sq. Ft.
2ND FLOOR	
Living A/C Area	1,574 Sq. Ft.
Total Living A/C Area	5,322 Sq. Ft.
Total	6,774 Sq. Ft.

## CORAL ISLES

THE ESTATE HOME COLLECTION AT AVENIR