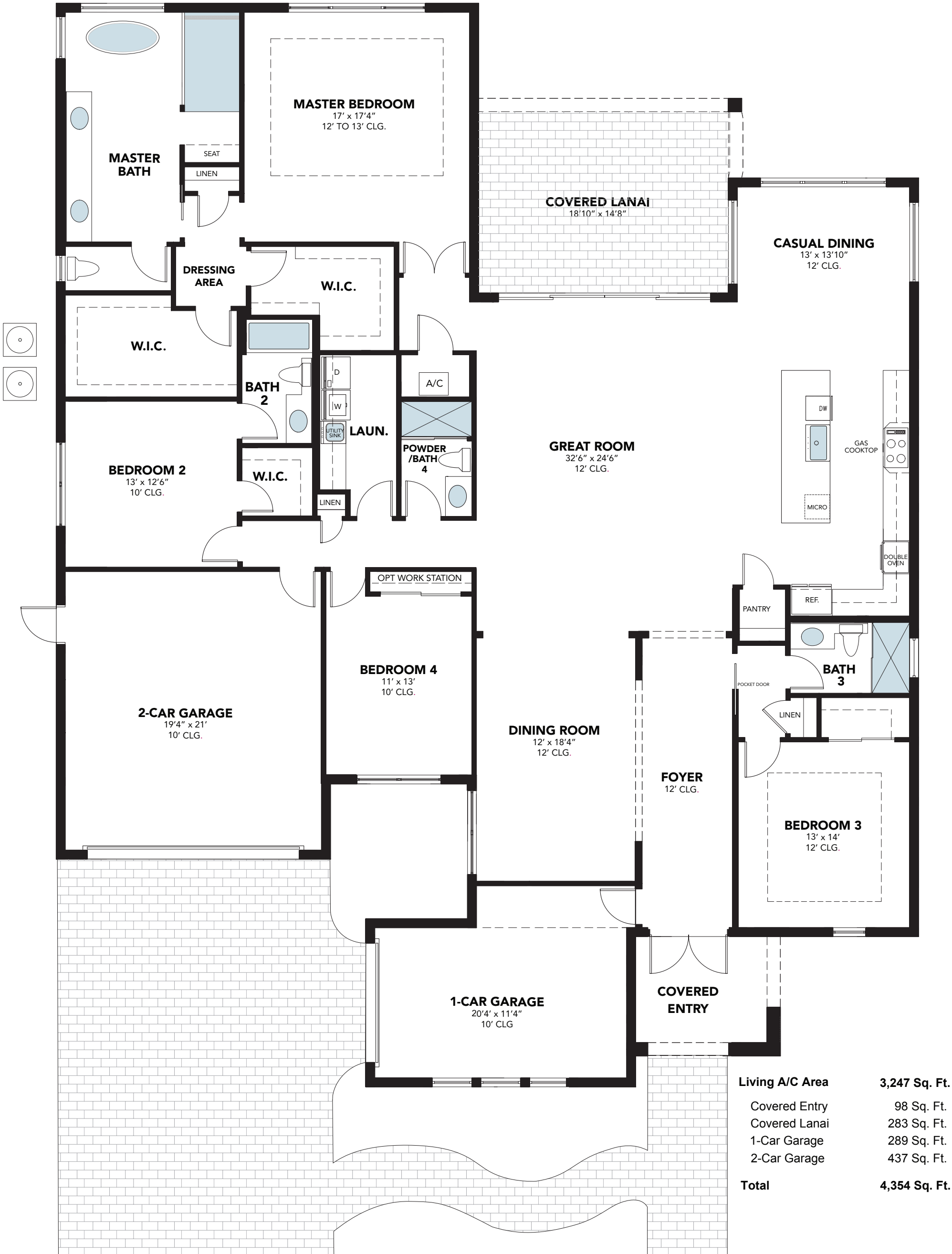


# The Antigua

4 BEDROOMS, 4 BATHS, 3-CAR GARAGE



Living A/C Area	3,247 Sq. Ft.
Covered Entry	98 Sq. Ft.
Covered Lanai	283 Sq. Ft.
1-Car Garage	289 Sq. Ft.
2-Car Garage	437 Sq. Ft.
<b>Total</b>	<b>4,354 Sq. Ft.</b>

## CORAL ISLES

THE ESTATE HOME COLLECTION AT AVENIR



MODERN



COASTAL Modern



A Private Gated Enclave



CONTEMPORARY Florida



*The Antigua*  
4 BEDROOMS, 4 BATHS, 3-CAR GARAGE

**Kenco Communities** *at* AVENIR



# CORAL ISLES

AVENIR • PALM BEACH GARDENS

## Live Legendary

9357 Coral Isles Circle, Palm Beach Gardens, FL 33412  
(561) 295-8404 | GoKenco.com

KENCO COMMUNITIES REALTY, LLC.

PLANS AND ELEVATIONS ARE ARTIST'S RENDERINGS ONLY, MAY NOT ACCURATELY REPRESENT THE ACTUAL CONDITION OF A HOME AS CONSTRUCTED, AND MAY CONTAIN OPTIONS WHICH ARE NOT STANDARD ON ALL MODELS. KENCO RESERVES THE RIGHT TO MAKE CHANGES TO THESE FLOOR PLANS, PRICES, SPECIFICATIONS, DIMENSIONS, DESIGNS AND ELEVATIONS WITHOUT PRIOR NOTICE. STATED DIMENSIONS AND SQUARE FOOTAGE ARE ESTIMATED AND SHOULD NOT BE USED AS REPRESENTATION OF THE HOME'S ACTUAL SIZE OR NET USABLE SQUARE FOOTAGE WHICH MAY BE LESS THAN THE ESTIMATED SQUARE FOOTAGE. ANY STATEMENT, VERBAL OR WRITTEN, REGARDING "UNDER AIR" OR "FINISHED AREA" OR ANY OTHER DESCRIPTION OR MODIFIER OF THE SQUARE FOOTAGE SIZE OF ANY HOME IS A SHORTHAND DESCRIPTION OF THE MANNER IN WHICH THE SQUARE FOOTAGE WAS ESTIMATED AND SHOULD NOT BE CONSTRUED TO INDICATE CERTAINTY. GARAGE OR BAY SIZES MAY VARY FROM HOME TO HOME AND MAY NOT ACCOMMODATE ALL VEHICLES. LOT SIZES ARE APPROXIMATE AND REFER TO SALES ASSOCIATE FOR EXACT MEASUREMENTS. SITE PLANS AND COMMUNITY MAPS ARE CONCEPTUAL IN NATURE AND ARE MERELY AN ARTIST'S RENDITION. THESE MAPS ARE SOLELY FOR ILLUSTRATIVE PURPOSES AND SHOULD NEVER BE RELIED UPON.

